



STITCH

TOOL FOR THE CREATION OF FULL SPINE AND FULL LEG IMAGES

SYSTEM REQUIREMENTS

	MINIMUM	RECOMMENDED
OS:	Windows XP Professional, Vista	Windows Vista
CPU:	Pentium 1 GHz	Pentium 2 GHz
RAM:	512 MB RAM	1 GB RAM
HDD:	5 GB of empty hard disc space	5 GB of empty hard disc space
Graphics:	800 x 600 pixel	1280 x 1024 pixel or more
Hardware:		Dell hardware



OUR SOLUTIONS FOR YOUR IMAGING NEEDS

- iQ-VIEW®** The radiology reading station
- iQ-VIEW® 3D** 3D post-processing workstation
- iQ-CAPTURE** Add-on hardware module for capturing images from analog video sources
- iQ-WEBX** PACS server for storage, teleradiology and image distribution
- iQ-HIS/RIS CLIENT** Simplifying the workflow
- iQ-PRINT** DICOM paper print server
- iQ-ROBOT** Automatic burning and labeling of patient CDs and DVDs
- iQ-ROUTER** Image compression for teleradiology and workflow management
- iQ-MAIL** Simple teleradiology using DICOM e-mail
- iQ-WORKLIST** DICOM worklist server optimizing your workflow
- iQ-NUC** Simple nuclear PACS integration
- iQ-RIS** The RIS that simplifies your work
- iQ-DISPLAYS** Medical diagnostic monitors
- iQ-CR ACE** Efficiency in CR
- DICOMReader** Read any DICOM CD into your PACS
- OrthoView™** Add-on module for orthopedic templating and trauma planning



© 2009 IMAGE Information Systems Ltd. - For a Better View in Diagnostics! IQ-STITCH 1.0 INT ENG 001R

MERGE YOUR IMAGES IN JUST 5 SIMPLE STEPS





GET THE BIG PICTURE AT A GLANCE

iQ-STITCH is the ideal tool to merge several related radiographies into one image.

This function is especially important for orthopedic and veterinary images, where the original objects exceed the size that can be captured with one single CR cassette. By using iQ-STITCH, two to even five images can be stitched in one single process.

iQ-STITCH is extremely easy to use. Thanks to its Stitching Wizard, operators can execute the stitching process in just five easy steps:

1. Ordering the sequence
2. Rotating and/or flipping
3. Stitching
4. Typing in the image information
5. Releasing and saving the stitched image

iQ-STITCH works with every X-ray vendor and can be used as a standalone application with any PACS, or rather, as an integrated tool of iQ-VIEW® or the iQ-CR ACE acquisition station.

iQ-STITCH FEATURES

GENERAL

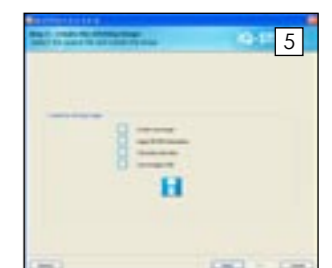
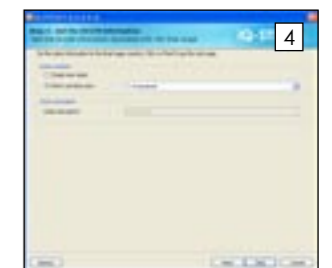
- Easy-to-use Stitching Wizard to create images of the type "full spine" or "full leg"
- Order, flip and rotation of source images
- Window/leveling
- Free positioning of each source image with the mouse
- Zoom/Pan
- Runs as standalone tool or directly integrated with iQ-VIEW® (Version 2.6 or higher)
- Definition of an unlimited number of cassette holder presets including default values for scaling, distance of images, value for "empty" pixel areas and used file encoding

IMAGE REQUIREMENTS

- Import and Export as DICOM files
- Any grayscale images (MONOCHROME1 or MONOCHROME2) with a grey depth between 8 and 16 bit
- Import compressed and uncompressed images
- Export uncompressed images as little endian implicit or explicit
- Support of any X-ray modality (e.g. CR, DR, XA, XS)
- Support of any image size

LANGUAGES

- English, German and Spanish



Just 5 simple steps to create the stitched image.